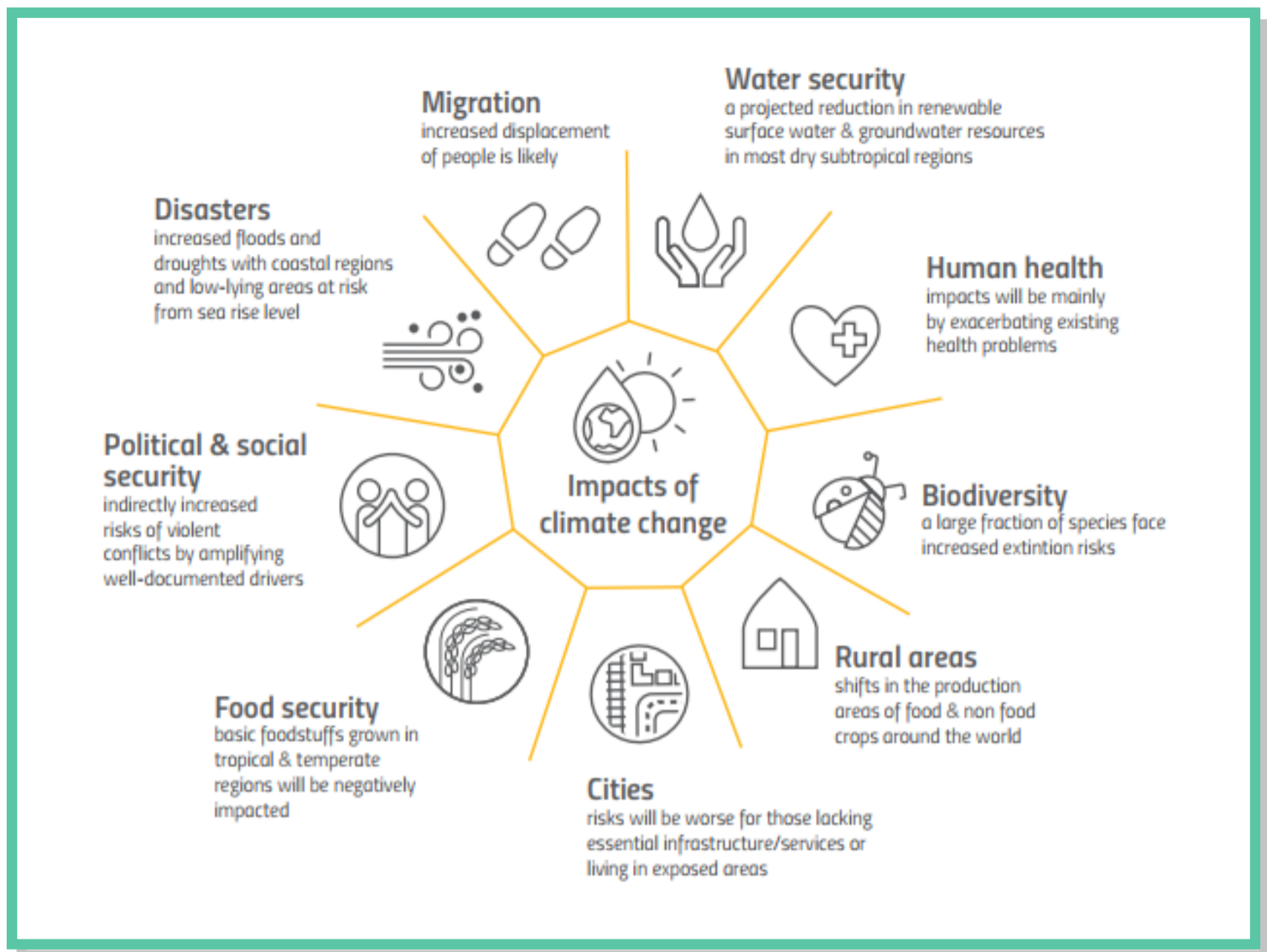


WHAT ARE THE IMPACTS OF CLIMATE CHANGE?



HOW CAN SLM HELP?

EMISSION REDUCTION, CLIMATE ADAPTATION AND MITIGATION

FORESTS

- CARBON STORAGE
- SOIL FERTILITY
- BIODIVERSITY CONSERVATION

AGRICULTURE

- FOOD SECURITY
- WATER SECURITY
- SOCIAL SECURITY

SUSTAINABLE LAND USE PLANNING

- RENEWABLE ENERGY
- IMPROVED DISASTER PREPAREDNESS
- HUMAN HEALTH



United Nations
Convention to Combat
Desertification

#LoveLand4Climate